

Engineering SMART solutions for every application...

**home. commercial. industrial.  
infrastructure.**

**UNITARY PRODUCTS**



Adjustable Inverter AC



Inverter Window AC



**COMMERCIAL AIRCONDITIONING**



Magnetic Bearing Chiller



VFD Screw Chiller



VRF System



SOLO VRF  
Inverter Ducted

Inverter  
Free Match  
Multi Split



**Voltas National Network**  
Easy Access • Quick Satisfaction

**Customer Care**  
1800 233 1202 or 1800 266 0100

**VOLTAS**

VOLTAS LIMITED  
Domestic Projects Group, Voltas House 'B', 3rd floor, T. B. Kadam Marg, Chinchpokli, Mumbai-400 033, India  
Tel: +91 22 6665 6857. Email: bijogeorge@voltas.com, jatinpanchal@voltas.com, shubhambahadkar@voltas.com  
North: psnorth@voltas.com, East: pseast@voltas.com, South: pssouth@voltas.com, West: pswest@voltas.com  
Website: www.voltas.com

**NORTH ZONE:** DELHI (011) 66505659/66505678/66505680/66505657 **CHANDIGARH** (0172) 4111800 **JAIPUR** (0141) 6541011 **LUCKNOW** 8840739788 **EAST ZONE:** KOLKATA (033) 66266268 / 662662283 / 66266262 **BHUBANESHWAR** (0674) 2747868 **PATNA** (0612) 2500786 **RAIPUR** (077) 14033886 **WEST ZONE:** MUMBAI (022) 66656754/ 66656756 / 66656757 / 66656759 / 66656760 **NAGPUR** (0712) 6456894 **AHMEDABAD** (079) 66301102 / 6630 1107 **PUNE** (020) 66297446 **INDORE** (0731) 2498616 **SOUTH ZONE:** CHENNAI (044) - 66760357 / 66760315 / 66760346 **BENGALURU** (080) 22535648 **HYDERABAD** (040) 66743007 **COCHIN** (0484) 6605527.

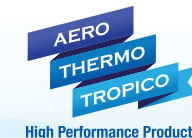
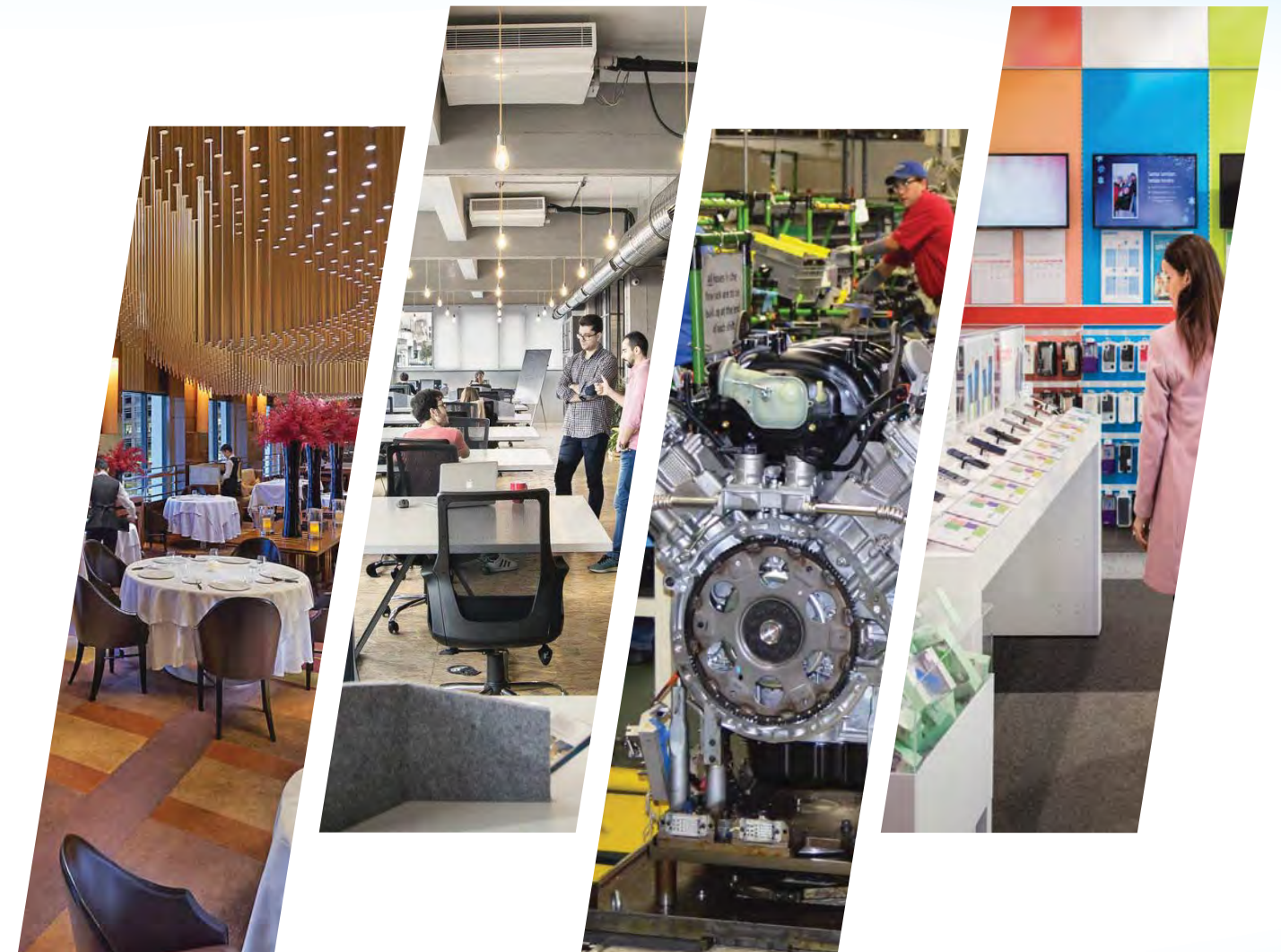
VL/DSU/08/19

India's Largest Air Conditioning Company

**VOLTAS**

**VOLTAS SMART DUCTED SYSTEMS**

with Extensive Range of Products



High Static Units



Ductable Split AC

Packaged AC



\* Options available



## Profile

*Voltas, a member of the Tata Group, is India's No.1 air conditioning company and one of the world's premier engineering solutions providers and project specialists.*

Founded in India in 1954, Voltas Limited offers premier cooling and **engineering solutions** for a wide spectrum of industries in areas such as **heating, ventilation and air conditioning, refrigeration, electro-mechanical projects, textile machinery, mining and construction equipment, water management & treatment, cold chain solutions, building management systems, electrification and indoor air quality.**

**The Company's strengths lies principally in:**

- Management and execution of electro-mechanical projects, Including **air conditioning** and **refrigeration**
- Sourcing, installation and servicing of diverse technology-based systems serving Indian industry through representation of global technology leaders

### Organization

Voltas' operations have been organized into three independent business-specific clusters. Each of these has its own facilities for market coverage and service to customers.

### Unitary Cooling Products

- Air Conditioners
- Commercial Refrigeration
- Water Coolers & Dispensers

### Domestic Projects Group

- Electrical, Mechanical & Refrigeration Solutions
- Electrical & Mechanical Solutions (international)
- Electrical Projects Business - focusing on Rural Electrification (Distribution / Improvement)
- Water Management Business Division - Large Capacity STP (MLD), Effluent treatment, Rural Water Supply Scheme
- Customer Care - Life Cycle Management through managed services

### Engineering Products and Services

- Textile Machinery
- Mining & Construction Equipment

### Projects

Over the years, Voltas has built up a substantial reputation and is actively engaged in **turnkey projects** in fields such as electro-mechanical works comprising **HVAC, electrical systems for buildings, plumbing, fire fighting, ELV and specialized systems, building security and other Utilities, electrical power projects, environmental and water pollution control, pumping stations and water supply, and water and waste water treatment projects.** The Company has ISO 9001 - 2008 standards certification in its projects businesses, and has successfully undertaken and executed prestigious high-value projects in the Middle East, Far East and South East Asia, CIS countries, Africa and India.

### Manufacturing

With state-of-the-art Manufacturing facilities at Vadodara and Pantnagar and upcoming factories at Tirupati & Sanand, Voltas possesses total capability in the manufacturing of **room air conditioners, commercial air-conditioning and refrigeration equipment, water coolers, commercial refrigerators, visicoolers etc.** Also, we have forayed into home appliances segment under the new brand **Voltbek Home Appliances Pvt. Ltd.** by launching **refrigerators, washing machines, microwave ovens and dishwashers** with our new manufacturing unit coming up at Sanand, Gujrat.

### Sales & service

**Voltas' sales and service operations cover:**

- In-house manufactured products, including air conditioning equipment and unitary cooling products
- Products of principals represented, including textile machinery and mining and construction equipment In all these sectors, the company demonstrates its specialised engineering expertise, as well as its extensive network for global sourcing.

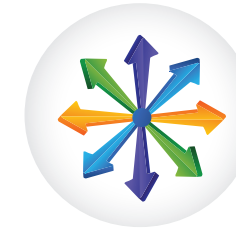
**VOLTAS**

## VOLTAS MICRO-PROCESSOR CONTROLLED DUCTED SYSTEMS

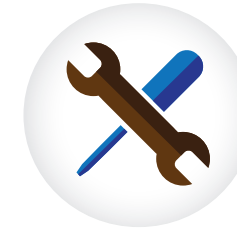
Designed to meet every cooling need of the customer with extensive range of Ductable & Packaged Air-conditioning units.



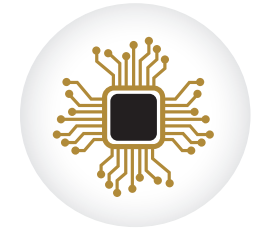
VALUE FOR MONEY



WIDE PRODUCT RANGE



EASE OF SERVICE



IOT ENABLED



Standard & high performance products for high airflow & sustaining high ambient conditions.

CONFERENCE HALLS

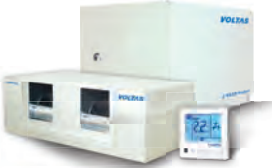
THEATRES

RESTAURANTS



PRODUCT LINEUP

VOLTAS Ductable & Packaged Units are available in both **Air-cooled** and **Water-cooled** types making it suitable for every customer need. Voltas Cares for the environment, hence refrigerants\* used in our systems are R407C and R410A.

UNIT TYPE / APPEARANCE	REFRIGERANT	5.5 TR	6 TR	8.75 TR	9 TR	11 TR	12 TR	17 TR	18 TR	22 TR
<div>Standard A/C Ceiling suspended Ductable Split Units</div> <div></div>	R22 / R407c	●		●		●		●		●
	R410a		●		●		●		●	
High Performance A/C Ceiling suspended Ductable Split Units	R22 / R407c	●		●		●		●		
<div>Standard W/C Ceiling suspended Ductable Split Units</div> <div></div>	R22 / R407c	●		●		●		●		
<div>Standard A/C Floor Mounted Packaged Units</div> <div></div>	R22 / R407c	●		●		●		●		●
	R410a		●		●		●		●	
High Performance A/C Floor Mounted Packaged Units	R22 / R407c	●		●		●		●		
<div>Standard W/C Floor Mounted Packaged Units</div> <div></div>										
	R22 / R407c	●		●		●		●		●

\* Also available in R22 refrigerant

KEY FEATURES



**Energy Efficiency**

- Energy efficient scroll compressor
- Internally grooved copper tubes
- Microprocessor controller



**Silent Indoor & Outdoor Units**

- Technologically advanced components
- Insulation to all critical parts
- Rubber pads for reduced vibration



**Space Saving**

- Compact sized ODUs & IDUs
- No floor space required for ductable IDUs
- ODUs can be installed on wall with bracket



**Blue Fin treatment**

- Anti-corrosive hydrophilic coating
- Optimum heat exchange in all climates

**Factory Charged Units**

- Standard refrigerant charge from factory for all Ductable & W/C Packaged units
- Reduction in installation & commissioning time



**Slim Ducted IDUs**

- Enable high false ceiling height
- Improved aesthetics



**Indoor Air Quality**

- Special synthetic woven filters
- Easily removable and washable
- Ensure clean air all the time



**Reliability**

- Use of sophisticated tooling and machinery
- Modern R&D facility
- Best-in-class products
- High levels of reliability



**New look - maintenance friendly design**

Frame Structure

•

Easy access to all sections

•

Ease of serviceability

•

Reduction of down time

CONTROL ROOMS

MULTIPLEXES

BANQUET HALLS

CONFERENCE HALLS

THEATRES

RESTAURANTS

**MICROPROCESSOR-BASED CONTROLLER**

**MONITORING AT YOUR FINGERTIPS**

Advanced Controller installed on all the units offers you the following benefits :



PACKAGED UNIT CONTROLLER



DUCTED UNIT CONTROLLER



**Large LCD Screen \***  
Easy readability



**Auto Start Mode**  
For automatic start, after a power failure



**Inbuilt Temperature Sensor**  
For precise control within +/- 0.5deg C



**Anti-recycle Tmer**  
Compressor starts after set delay, enhancing its life



**4 Modes of Operation**  
Cool, Dry, Fan and Energy Save



**Motor Protection Device**  
Protection from phase reversal, imbalance, overload & single phasing



**Energy Saving Mode \***  
Auto switch-off of condenser fans when compressor trips



**Fan Speed Selection \***  
Low, Medium, High, Auto



**Self-Diagnosis Function**  
Constant monitoring of errors with alarms



**Optional Touch Controller for PAC**  
Makes your unit look SMART



**Equalization of Compressor Runtime**  
Ensures a longer life for compressors



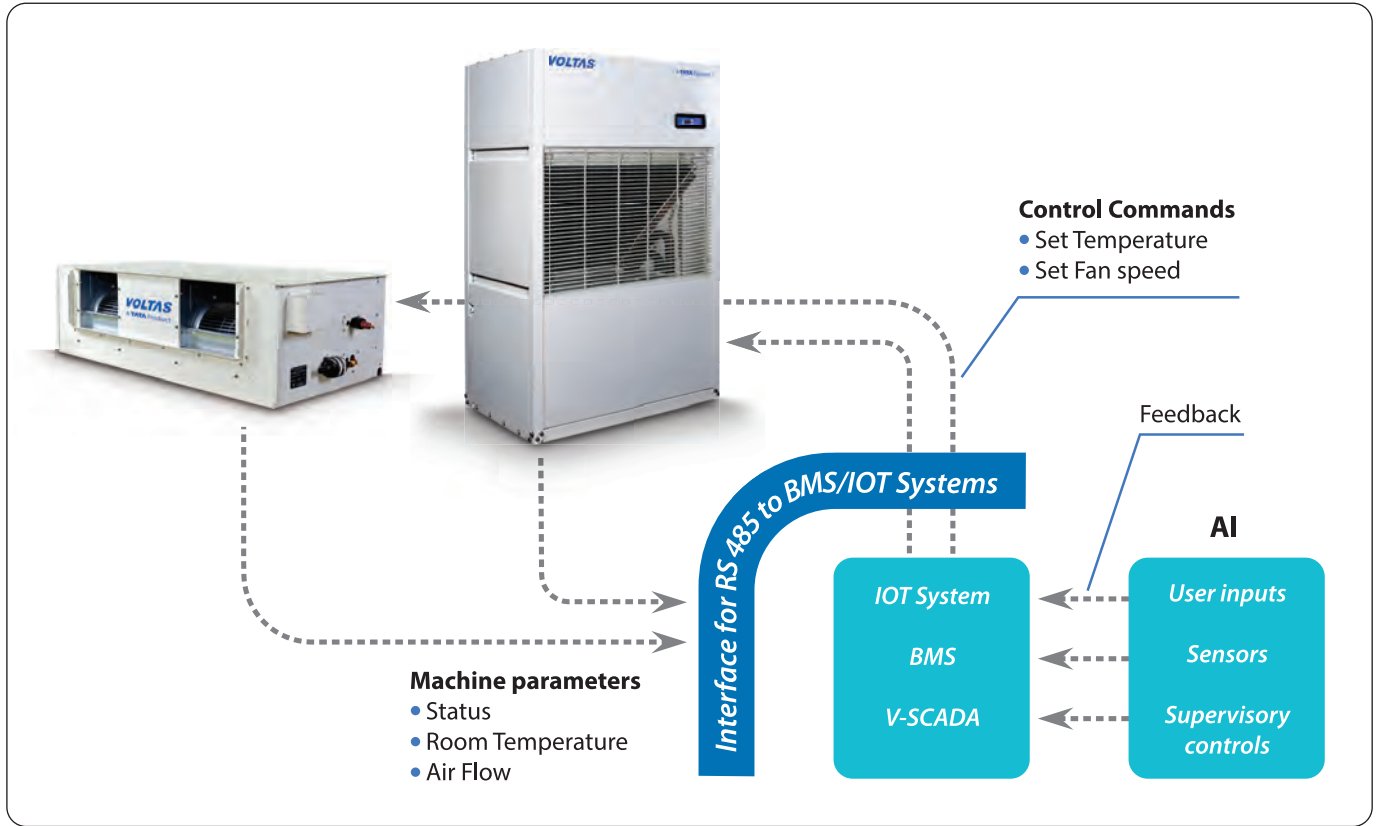
**On /Off Timer\***  
Schedule your AC run-time in a day

\* Applicable only for ducted units controller



**Intelligent Communication Port as a standard feature**

Both Packaged and Ducted Split Units have controllers suitable for RS 485 communication. It comes in handy when connecting the units to third party BMS.



**Also, Complete system can be wired**

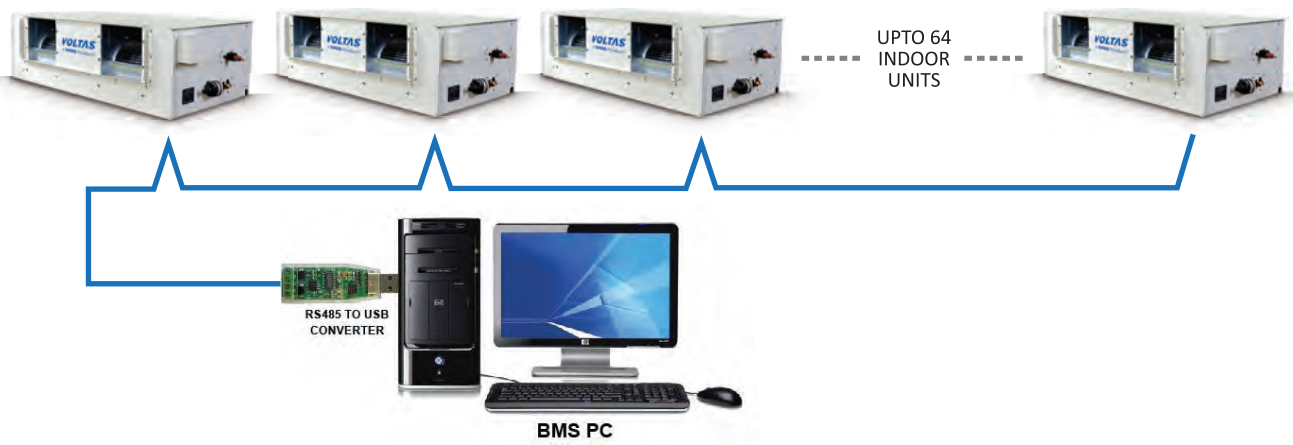
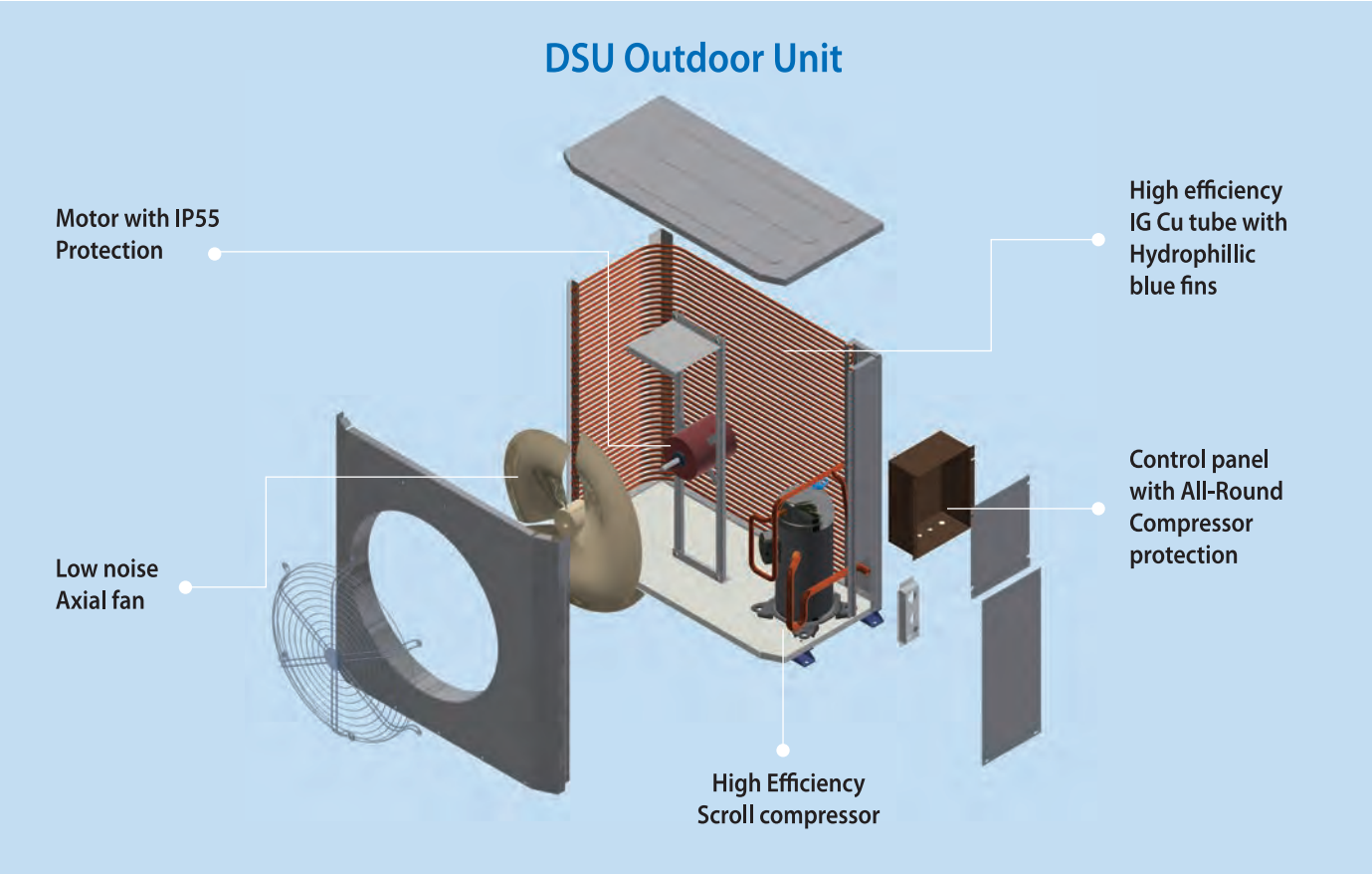
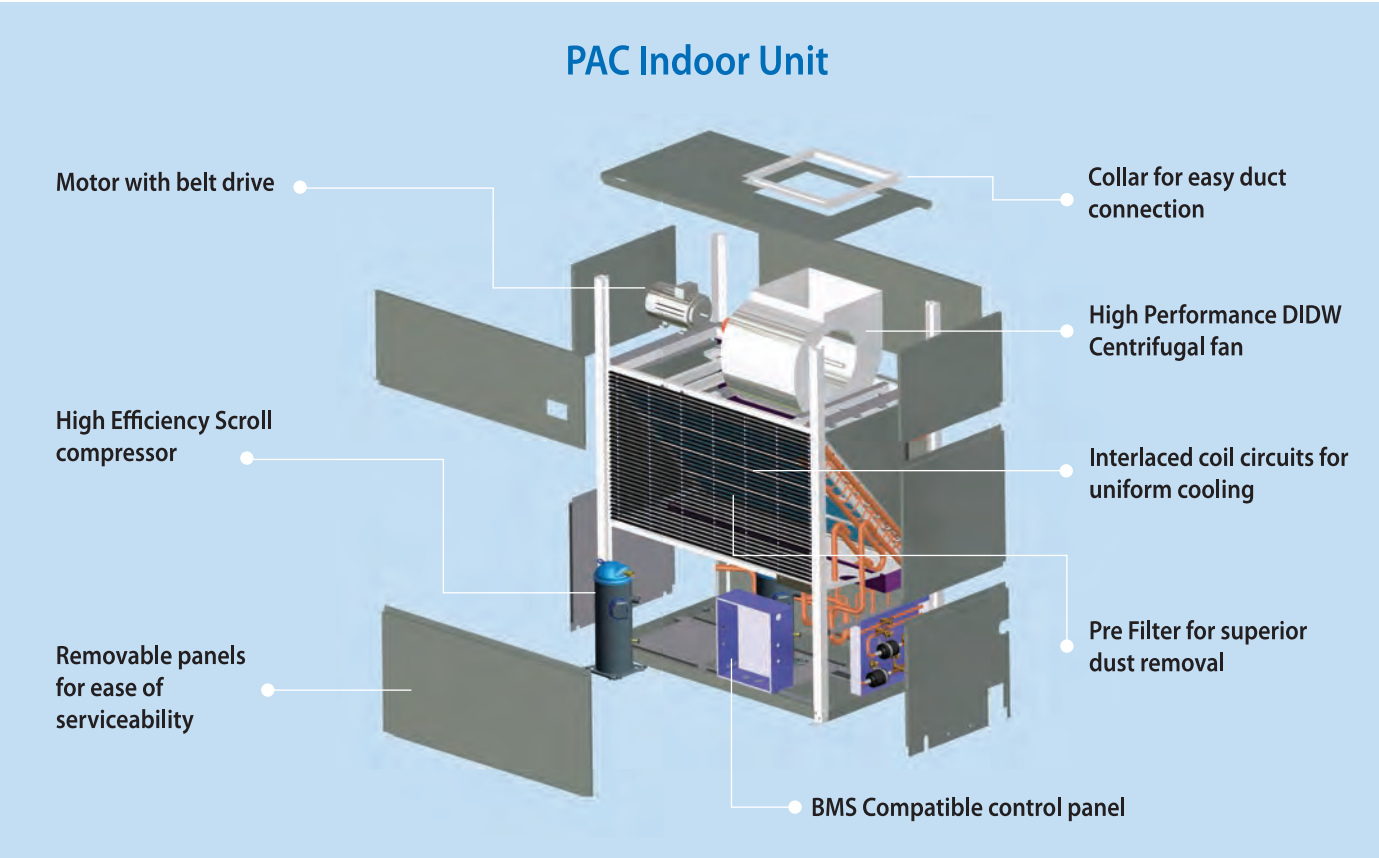




ILLUSTRATION OF THE UNITS



TECHNICAL DATA - DUCTABLE SPLIT UNITS



A/C DUCTABLE SPLIT UNITS (R22/R407c)								
Nominal Capacity	TR	5.5 TR	8.5 TR	8.75 TR	11 TR	11 TR	17 TR	22 TR
Set Model no.- R22		ACADS05511	ACADS08721	ACADS08711	ACADS11021	ACADS11011	ACADS17021	ACADS22021
Set Model no.- R407c		ACADS05512	ACADS08722	ACADS08712	ACADS11022	ACADS11012	ACADS17022	ACADS22022
EVAPORATOR UNITS								
Airflow	CMH	3740	5780	5780	7480	7480	11560	14960
Evaporator Fan		Centrifugal Forward Curved Fan, Double Inlet Double Width						
Power Supply	V/Ph/Hz	230V • 1PH • 50Hz (2 Wire, AC Supply)						
Dimensions (L x D x H)	mm	1228 x 665 x 404	1508 x 795 x 404	1508 x 795 x 404	1820 x 780 x 475	1820 x 780 x 475	2020 x 750 x 575	2100 x 1240 x 640
Net weight	kg	64	81	88	112	117	181	292
AIR-COOLED CONDENSING UNITS								
No. of Units/Set		1	1	1	2	1	2	2
No. of Compressors/CU		1	2	1	1	1	1	1
Compressor Type		Hermetic Scroll						
Power Supply	V/Ph/Hz	415V • 3PH • 50Hz (4 Wire, AC Supply)						
Condenser fan		Axial	Axial	Axial	Axial	Axial	Axial	Axial
No. of Fans/CU		1	1	1	1	2	1	2
Dimensions/CU (L x D x H)	mm	950 x 450 x 960	1320 x 460 x 960	1200 x 450 x 960	950 x 450 x 960	1550 x 575 x 960	1200 x 450 x 960	1550 x 575 x 960
Net weight/CU	kg	120	155	137	120	170	137	170
Liquid Line Size	mm	12.7	9.52	15.8	12.7	15.8	15.8	15.8
Suction Line Size	mm	19	12.7	28.5	19	28.5	28.5	28.5
MCB Rating	A	32	50	50	63	63	100 SFU / MCCB	125 SFU / MCCB
Cable Size (Material)- Incomer	Sq.mm	4C x 6 (Cu) 4C x 10 (Al)	4C x 10 (Cu) 4C x 16 (Al)	4C x 10 (Cu) 4C x 16 (Al)	4C x 16 (Cu) 3.5C x 25 (Al)	4C x 16 (Cu) 3.5C x 25 (Al)	3.5C x 25 (Cu) 3.5C x 25 (Al)	3.5C x 35 (Cu) 3.5C x 50 (Al)
Cable Size (Material)- ODU to IDU	Sq.mm	3C x 1.5 (Cu)	3C x 1.5 (Cu)	3C x 1.5 (Cu)	3C x 1.5 (Cu)	3C x 1.5 (Cu)	3C x 1.5 (Cu)	3C x 1.5 (Cu)

W/C DUCTABLE SPLIT UNITS (R22/R407c)								
Nominal Capacity	TR	5.5 TR	-	8.75 TR	11 TR	-	17 TR	-
Set Model no.- R22		ACWDS05511	-	ACWDS08711	ACWDS11021	-	ACWDS17021	-
Set Model no.- R407c		ACWDS05512	-	ACWDS08712	ACWDS11022	-	ACWDS17022	-
EVAPORATOR UNITS								
Airflow	CMH	3740	-	5780	7480	-	11560	-
Evaporator Fan		Centrifugal Forward Curved Fan, Double Inlet Double Width						
Power Supply	V/Ph/Hz	230V • 1PH • 50Hz (2 Wire, AC Supply)						
Dimensions (L x D x H)	mm	1228 x 665 x 404	-	1508 x 795 x 404	1820 x 780 x 475	-	2020 x 750 x 575	-
Net weight	kg	65	-	88	117	-	181	-
WATER COOLED CONDENSING UNITS								
No. of Units/Set		1	-	1	2	-	2	-
No. of Compressors/CU		1	-	1	1	-	1	-
Compressor Type		Hermetic Scroll						
Power Supply		415V • 3PH • 50Hz (4 Wire, AC Supply)						
Condenser Water (In/Out)	in	1-1/4" BSP	-	1-1/4" BSP	1-1/4" BSP	-	1-1/4" BSP	-
Water Flow Rate/CU	LPM	73	-	113	73	-	113	-
Dimensions/CU (L x D x H)	mm	900 x 665 x 615	-	900 x 665 x 615	900 x 665 x 615	-	900 x 665 x 615	-
Net weight/CU	kg	155	-	170	155	-	170	-
Liquid Line Size	mm	12.7	-	15.8	12.7	-	15.8	-
Suction Line Size	mm	19	-	28.5	19	-	28.5	-
MCB Rating	A	25	-	50	50	-	100 SFU / MCCB	-
Cable Size (Material)- Incomer	Sq.mm	4C x 4 (Cu) 4C x 6 (Al)	-	4C x 10 (Cu) 4C x 16 (Al)	4C x 10 (Cu) 4C x 16 (Al)	-	3.5C x 25 (Cu) 3.5C x 25 (Al)	-
Cable Size (Material)- ODU to IDU	Sq.mm	3C x 1.5 (Cu)	-	3C x 1.5 (Cu)	3C x 1.5 (Cu)	-	3C x 1.5 (Cu)	-

**Notes:**  
1 The nominal capacities mentioned are at rating conditions of Indoor Temperature: 27°C DBT /19°C WBT and Outdoor Temperature: 35°C DBT for Air-cooled units & Cooling Water inlet temperature of 32°C for Water-cooled units.  
2 Standard Air Cooled Units can operate upto maximum ambient temperature of 48°C.  
3 The Gas charging at Factory is as per standard connection distance between ODU & IDU. For extra lengths, Gas topping up at site is required.  
4 The piping sizes given are recommended for 7.5 m equivalent length between ODU & IDU. For longer piping lengths, please contact Voltas representative.  
5 In addition to mentioned above, one more interlocking cable of size 3C x 1.5 sq mm is required between IDU & ODU  
6 Please contact VOLTAS sales representative for units below 5.5TR capacity & Condensing Units with Microchannel Heat exchangers.

Product design and innovation is a continuous process in VOLTAS and hence the above specifications are subject to change without notice.



TECHNICAL DATA - AIR COOLED UNITS



A/C DUCTABLE SPLIT UNITS (R410a)						
Nominal Capacity	TR	6 TR	9 TR	12 TR	12 TR	18 TR
Set Model no.		ACADS06013	ACADS09013	ACADS12013	ACADS12023	ACADS18023
EVAPORATOR UNITS						
Airflow	CMH	3900	6120	7800	7800	11700
Evaporator Fan		Centrifugal Forward Curved Fan, Double Inlet Double Width				
Power Supply	V/Ph/Hz	230V • 1PH • 50Hz (2 Wire, AC Supply)				
Dimensions (L x D x H)	mm	1228 x 665 x 404	1508 x 795 x 404	1820 x 780 x 475	1820 x 780 x 475	2020 x 750 x 575
Net weight	kg	64	88	117	112	181
AIR-COOLED CONDENSING UNITS						
No. of Units/Set		1	1	1	2	2
No. of Compressors/CU		1	1	1	1	1
Compressor Type		Hermatic Scroll				
Power Supply	V/Ph/Hz	415V • 3PH • 50Hz (4 Wire, AC Supply)				
Condenser fan		Axial	Axial	Axial	Axial	Axial
No. of Fans/CU		1	1	2	1	1
Dimensions/CU (L x D x H)	mm	950 x 450 x 960	1200 x 450 x 960	1550 x 575 x 960	950 x 450 x 960	1200 x 450 x 960
Net weight/CU	kg	120	137	170	120	137
Liquid Line Size	mm	12.7	15.8	15.8	12.7	15.8
Suction Line Size	mm	19	28.5	28.5	19	28.5
MCB Rating	A	32	63	63	63	100 SFU / MCCB
Cable Size (Material)-Incomer	Sq.mm	4C x 6 (Cu) / 4C x 10 (Al)	4C x 16 (Cu) / 3.5C x 25 (Al)	4C x 16 (Cu) / 3.5C x 25 (Al)	4C x 16 (Cu) / 3.5C x 25 (Al)	3.5C x 25 (Cu) / 3.5C x 35 (Al)
Cable Size (Material)-ODU to IDU	Sq.mm	3C x 1.5 (Cu)	3C x 1.5 (Cu)	3C x 1.5 (Cu)	3C x 1.5 (Cu)	3C x 1.5 (Cu)

TECHNICAL DATA - AERO SERIES DUCTABLE SPLIT UNITS



HIGH PERFORMANCE DUCTABLE SPLIT UNITS (R22 & R407c)					
Nominal Capacity	TR	5.5 TR	8.75 TR	11 TR	17 TR
Set Model no.- R22		ACADS05511AR	ACADS08711AR	ACADS11021AR	ACADS17021AR
Set Model no.- R407c		ACADS05512AR	ACADS08712AR	ACADS11022AR	ACADS17022AR
EVAPORATOR UNITS					
Airflow	CMH	5780	7480	11560	14960
Evaporator Fan		Centrifugal Forward Curved Fan, Double Inlet Double Width			
Power Supply	V/Ph/Hz	230V • 1PH • 50Hz (2 Wire, AC Supply)			
Dimensions (L x D x H)	mm	1508 x 795 x 404	1820 x 780 x 475	2020 x 750 x 575	2100 x 1240 x 640
Net weight	kg	88	112	181	292
AIR-COOLED CONDENSING UNITS					
No. of Units/Set		1	1	2	2
No. of Compressors/CU		1	1	1	1
Compressor Type		Hermatic Scroll			
Power Supply	V/Ph/Hz	415V • 3PH • 50Hz (4 Wire, AC Supply)			
Condenser fan		Axial	Axial	Axial	Axial
No. of Fans/CU		1	1	1	1
Dimensions/CU (L x D x H)	mm	950 x 450 x 960	1200 x 450 x 960	950 x 450 x 960	1200 x 450 x 960
Net weight/CU	kg	120	137	120	137
Liquid Line Size	mm	12.7	15.8	12.7	15.8
Suction Line Size	mm	19	28.5	19	28.5
MCB Rating	A	32	50	63	100 SFU / MCCB
Cable Size (Material)-Incomer	Sq.mm	4C x 6 (Cu) / 4C x 10 (Al)	4C x 10 (Cu) / 4C x 16 (Al)	4C x 16 (Cu) / 3.5C x 25 (Al)	3.5C x 25 (Cu) / 3.5C x 25 (Al)
Cable Size (Material)-ODU to IDU	Sq.mm	3C x 1.5 (Cu)	3C x 1.5 (Cu)	3C x 1.5 (Cu)	3C x 1.5 (Cu)

Notes:  
1 The nominal capacities mentioned are at rating conditions of Indoor Temperature: 27°C DBT /19°C WBT and Outdoor Temperature: 35°C DBT for Air-cooled units.  
2 Standard & AERO Air Cooled Units can operate upto maximum ambient temperature of 48°C.  
3 The Gas charging at Factory is as per standard connection distance between ODU & IDU. For extra lengths, Gas topping up at site is required.  
4 The piping sizes given are recommended for 7.5 m equivalent length between ODU & IDU. For longer piping lengths, please contact Voltas representative.  
5 In addition to mentioned above, one more interlocking cable of size 3C x 1.5 sq mm is required between IDU & ODU.

Product design and innovation is a continuous process in VOLTAS and hence the above specifications are subject to change without notice.

TECHNICAL DATA - THERMO SERIES DUCTABLE SPLIT UNITS



HIGH PERFORMANCE DUCTABLE SPLIT UNITS (R22 & R407c)					
Nominal Capacity	TR	5.5 TR	8.75 TR	11 TR	17 TR
Set Model no.- R22		ACADS05511TH	ACADS08711TH	ACADS11021TH	ACADS17021TH
Set Model no.- R407c		ACADS05512TH	ACADS08712TH	ACADS11022TH	ACADS17022TH
EVAPORATOR UNITS					
Airflow	CMH	3740	5780	7480	11560
Evaporator Fan		Centrifugal Forward Curved Fan, Double Inlet Double Width			
Power Supply	V/Ph/Hz	230V • 1PH • 50Hz (2 Wire, AC Supply)			
Dimensions (L x D x H)	mm	1228 x 665 x 404	1508 x 795 x 404	1820 x 780 x 475	2020 x 750 x 575
Net weight	kg	64	88	112	181
AIR-COOLED CONDENSING UNITS					
No. of Units/Set		1	1	2	2
No. of Compressors/CU		1	1	1	1
Compressor Type		Hermetic Scroll			
Power Supply	V/Ph/Hz	415V • 3 PH • 50Hz (4 Wire, AC Supply)			
Condenser fan		Axial			
No. of Fans/CU		1	2	1	2
Dimensions/CU (L x D x H)	mm	1200 x 450 x 960	1550 x 575 x 960	1200 x 450 x 960	1550 x 575 x 960
Net weight/CU	kg	137	170	137	170
Liquid Line Size	mm	12.7	15.8	12.7	15.8
Suction Line Size	mm	19	28.5	19	28.5
MCB Rating	A	32	50	63	100 SFU / MCCB
Cable Size (Material)-Incomer	Sq.mm	4C x 6 (Cu) / 4C x 10 (Al)	4C x 10 (Cu) / 4C x 16 (Al)	4C x 16 (Cu) / 3.5C x 25 (Al)	3.5C x 25 (Cu) / 3.5C x 25 (Al)
Cable Size (Material)-ODU to IDU	Sq.mm	3C x 1.5 (Cu)	3C x 1.5 (Cu)	3C x 1.5 (Cu)	3C x 1.5 (Cu)

TECHNICAL DATA - TROPICO SERIES DUCTABLE SPLIT UNITS



HIGH PERFORMANCE DUCTABLE SPLIT UNITS (R22 & R407c)					
Nominal Capacity	TR	5.5 TR	8.75 TR	11 TR	17 TR
Set Model no.- R22		ACADS05511HS	ACADS08711HS	ACADS11021HS	ACADS17021HS
Set Model no.- R407c		ACADS05512HS	ACADS08712HS	ACADS11022HS	ACADS17022HS
EVAPORATOR UNITS					
Airflow	CMH	5780	7480	11560	14960
Evaporator Fan		Centrifugal Forward Curved Fan, Double Inlet Double Width			
Power Supply	V/Ph/Hz	230V • 1PH • 50Hz (2 Wire, AC Supply)			
Dimensions (L x D x H)	mm	1508 x 795 x 404	1820 x 780 x 475	2020 x 750 x 575	2100 x 1240 x 640
Net weight	kg	88	112	181	292
AIR-COOLED CONDENSING UNITS					
No. of Units/Set		1	1	2	2
No. of Compressors/CU		1	1	1	1
Compressor Type		Hermetic Scroll			
Power Supply	V/Ph/Hz	415V • 3PH • 50Hz (4 Wire, AC Supply)			
Condenser fan		Axial			
No. of Fans/CU		1	2	1	2
Dimensions/CU (L x D x H)	mm	1200 x 450 x 960	1550 x 575 x 960	1200 x 450 x 960	1550 x 575 x 960
Net weight/CU	kg	137	170	137	170
Liquid Line Size	mm	12.7	15.8	12.7	15.8
Suction Line Size	mm	19	28.5	19	28.5
MCB Rating	A	32	50	63	100 SFU / MCCB
Cable Size (Material)-Incomer	Sq.mm	4C x 6 (Cu) / 4C x 10 (Al)	4C x 10 (Cu) / 4C x 16 (Al)	4C x 16 (Cu) / 3.5C x 25 (Al)	3.5C x 25 (Cu) / 3.5C x 25 (Al)
Cable Size (Material)-ODU to IDU	Sq.mm	3C x 1.5 (Cu)	3C x 1.5 (Cu)	3C x 1.5 (Cu)	3C x 1.5 (Cu)

Notes:  
1 The nominal capacities mentioned are at rating conditions of Indoor Temperature: 27°C DBT /19°C WBT and Outdoor Temperature: 35°C DBT for Air-cooled units.  
2 THERMO & TROPICO Units can operate upto maximum ambient temperature of 52°C.  
3 The Gas charging at Factory is as per standard connection distance between ODU & IDU. For extra lengths, Gas topping up at site is required.  
4 The piping sizes given are recommended for 7.5 m equivalent length between ODU & IDU. For longer piping lengths, please contact Voltas representative.  
5 In addition to mentioned above, one more interlocking cable of size 3C x 1.5 sq mm is required between IDU & ODU.

Product design and innovation is a continuous process in VOLTAS and hence the above specifications are subject to change without notice.



TECHNICAL DATA - AIR COOLED PACKAGED UNITS

AIR-COOLED PACKAGED UNITS (R22/R407c)						
Nominal Capacity	TR	5.5 TR	8.75 TR	11 TR	17 TR	22 TR
Model no.- R22		ACDPUASC551P	ACDPUASC8751P	ACDPUASC1101P	ACDPUASC1701P	ACDPUASC2201P
Model no.- R407c		ACDPUASC552P	ACDPUASC8752P	ACDPUASC1102P	ACDPUASC1702P	ACDPUASC2202P
INDOOR UNITS						
Airflow	CMH	3740	5780	7480	11560	14960
No. of Compressors		1	1	2	2	2
Compressor Type		Hermetic Scroll				
Power Supply	V/Ph/Hz	415V • 3PH • 50Hz (4 Wire, AC Supply)				
Evaporator Fan		— Centrifugal Forward Curved, Double Inlet Double Width —				
Dimensions (L x D x H)	mm	960 x 730 x 1660	960 x 730 x 1660	1160 x 735 x 1796	1427 x 800 x 1872	1988 x 800 x 1872
Net weight	kg	221	231	287	351	499
AIR COOLED CONDENSERS						
No. of Condensers		1	1	2	2	2
Power Supply	V/Ph/Hz	230V • 1PH • 50Hz (2 Wire, AC Supply)				
Condenser fan		Axial				
No. of Fans/Condenser		1	1	1	1	2
Dimensions/CU (L x D x H)	mm	950 x 450 x 960	1200 x 450 x 960	950 x 450 x 960	1200 x 450 x 960	1550 x 575 x 960
Net weight/Condenser	kg	100	107	100	107	119
Liquid Line Size	mm	12.7	15.8	12.7	15.8	15.8
Hot gas Line Size	mm	15.8	19	15.8	19	19
MCB Rating	A	25	40	50	63	100 SFU / MCCB
Cable Size (Material)- Incomer	Sq.mm	4C x 4 (Cu) / 4C x 6 (Al)	4C x 4 (Cu) / 4C x 6 (Al)	4C x 10 (Cu) / 4C x 16 (Al)	4C x 10 (Cu) / 4C x 16 (Al)	3.5C x 25 (Cu) / 3.5C x 35 (Al)
Cable Size (Material)- ODU to IDU	Sq.mm	3C x 1.5 (Cu)	3C x 1.5 (Cu)	3C x 1.5 (Cu)	3C x 1.5 (Cu)	3C x 1.5 (Cu)

TECHNICAL DATA - WATER COOLED PACKAGED UNITS

WATER-COOLED PACKAGED UNITS (R22/R407c)						
Nominal Capacity	TR	5.5 TR	8.75 TR	11 TR	17 TR	22 TR
Model no.- R22		ACDPUWSC551P	ACDPUWSC8751P	ACDPUWSC1101P	ACDPUWSC1701P	ACDPUWSC2201P
Model no.- R407c		ACDPUWSC552P	ACDPUWSC8752P	ACDPUWSC1102P	ACDPUWSC1702P	ACDPUWSC2202P
INDOOR UNITS						
Airflow	CMH	3740	5780	7480	11560	14960
No. of Compressors		1	1	2	2	2
Compressor Type		Hermetic Scroll				
Power Supply	V/Ph/Hz	415V • 3PH • 50Hz (4 Wire, AC supply)				
No. of Condensers		1	1	2	2	2
Water Inlet/Outlet Size	Inch	1 -1/4" BSP	1 -1/4" BSP	1 -1/4" BSP x 2	1 -1/4" BSP x 2	1 -1/4" BSP x 2
Water Flow Rate/Condenser	LPM	73	113	73	113	146
Dimensions (L x D x H)	mm	960 x 730 x 1660	960 x 730 x 1660	1160 x 735 x 1796	1427 x 800 x 1872	1988 x 800 x 1872
Net weight	kg	252	260	421	470	615
MCB Rating	A	25	32	40	63	100 SFU / MCCB
Cable Size (Material)- Incomer	Sq.mm	4C x 4 (Cu) / 4C x 6 (Al)	4C x 4 (Cu) / 4C x 6 (Al)	4C x 10 (Cu) / 4C x 16 (Al)	4C x 10 (Cu) / 4C x 16 (Al)	3.5C x 25 (Cu) / 3.5C x 35 (Al)

Notes:  
1 The nominal capacities mentioned are at rating conditions of Indoor Temperature: 27°C DBT /19°C WBT and Outdoor Temperature: 35°C DBT for Air-cooled units & Cooling Water inlet temperature of 32°C for Water-cooled units.  
2 Standard Air cooled Packaged units are suitable to operate upto ambient temperature of 48°C  
3 Only Water-Cooled units are Factory Gas charged & Air-cooled units are to be charged at site.  
4 The piping sizes given are recommended for 7.5 m equivalent length between ODU & IDU. For longer piping lengths, please contact Voltas representative.  
5 In addition to mentioned above, one more interlocking cable of size 3C x 1.5 sq mm is required between IDU & ODU

Product design and innovation is a continuous process in VOLTAS and hence the above specifications are subject to change without notice.

TECHNICAL DATA - PACKAGED UNITS

A/C PACKAGED UNITS (R410a)					
Nominal Capacity	TR	6 TR	9 TR	12 TR	18 TR
Model no.		ACDPUASC603P	ACDPUASC903P	ACDPUASC1203P	ACDPUASC1803P
INDOOR UNITS					
Airflow	CMH	3900	6120	7800	11700
No. of Compressors		1	1	2	2
Compressor Type		Hermetic Scroll			
Power Supply	V/Ph/Hz	415V • 3PH • 50Hz ( 4 Wire, AC Supply )			
Evaporator Fan		Centrifugal Forward Curved, Double Inlet Double Width			
Dimensions (L x D x H)	mm	960 x 730 x 1660	960 x 730 x 1660	1160 x 735 x 1796	1427 x 800 x 1872
Net weight	kg	221	231	287	351
AIR COOLED CONDENSERS					
No. of Condensers		1	1	2	2
Power Supply	V/Ph/Hz	230V • 1PH • 50Hz ( 2 Wire, AC Supply )			
Condenser fan		Axial			
No. of Fans/Condenser		1	1	1	1
Dimensions/CU (L x D x H)	mm	950 x 450 x 960	1200 x 450 x 960	950 x 450 x 960	1200 x 450 x 960
Net weight/Condenser	kg	100	107	100	107
Liquid Line Size	mm	12.7	15.8	12.7	15.8
Hot gas Line Size	mm	15.8	19	15.8	19
MCB Rating	A	32	50	63	100 SFU / MCCB
Cable Size (Material)- Incomer	Sq.mm	4C x 4 (Cu) / 4C x 6 (Al)	4C x 10 (Cu) / 4C x 16 (Al)	4C x 10 (Cu) / 4C x 16 (Al)	3.5C x 25 (Cu) / 3.5C x 35 (Al)
Cable Size (Material)- ODU to IDU	Sq.mm	3C x 1.5 (Cu)	3C x 1.5 (Cu)	3C x 1.5 (Cu)	3C x 1.5 (Cu)

TECHNICAL DATA - AERO PACKAGED UNITS

HIGH PERFORMANCE PACKAGED UNITS (R22/R407c)					
Nominal Capacity	TR	5.5 TR	8.75 TR	11 TR	17 TR
Model no.- R22		ACDPUASC551PAR	ACDPUASC8751PAR	ACDPUASC1101PAR	ACDPUASC1701PAR
Model no.- R407c		ACDPUASC552PAR	ACDPUASC8752PAR	ACDPUASC1102PAR	ACDPUASC1702PAR
INDOOR UNITS					
Airflow	CMH	5780	7480	11560	14960
No. of Compressors		1	1	2	2
Compressor Type		Hermetic Scroll			
Power Supply	V/Ph/Hz	415V • 3PH • 50Hz (4 Wire, AC supply)			
Evaporator Fan		Centrifugal Forward Curved, Double Inlet Double Width			
Dimensions (L x D x H)	mm	960 x 730 x 1660	1160 x 735 x 1796	1427 x 800 x 1872	1988 x 800 x 1872
Net weight	kg	231	287	351	499
AIR COOLED CONDENSERS					
No. of Condensers		1	1	2	2
Power Supply	V/Ph/Hz	230V • 1PH • 50Hz (2 Wire, AC supply)			
Condenser fan		Axial			
No. of Fans/Condenser		1	1	1	1
Dimensions/CU (L x D x H)	mm	950 x 450 x 960	1200 x 450 x 960	950 x 450 x 960	1200 x 450 x 960
Net weight/Condenser	kg	100	107	100	107
Liquid Line Size	mm	12.7	15.8	12.7	15.8
Hot gas Line Size	mm	15.8	19	15.8	19
MCB Rating	A	25	40	50	63
Cable Size (Material)- Incomer	Sq.mm	4C x 4 (Cu) / 4C x 6 (Al)	4C x 4 (Cu) / 4C x 6 (Al)	4C x 10 (Cu) / 4C x 16 (Al)	4C x 10 (Cu) / 4C x 16 (Al)
Cable Size (Material)- ODU to IDU	Sq.mm	3C x 1.5 (Cu)	3C x 1.5 (Cu)	3C x 1.5 (Cu)	3C x 1.5 (Cu)

Notes:  
1 The nominal capacities mentioned are at rating conditions of Indoor Temperature: 27°C DBT /19°C WBT and Outdoor Temperature: 35°C DBT for Air-cooled units  
2 Standard & AERO Air cooled Packaged units are suitable to operate upto ambient temperature of 48°C  
3 Air-cooled Packaged units are to be charged at site.  
4 The piping sizes given are recommended for 7.5 m equivalent length between ODU & IDU. For longer piping lengths, please contact Voltas representative.  
5 In addition to mentioned above, one more interlocking cable of size 3C x 1.5 sq mm is required between IDU & ODU

Product design and innovation is a continuous process in VOLTAS and hence the above specifications are subject to change without notice.



TECHNICAL DATA - THERMO PACKAGED UNITS

HIGH PERFORMANCE PACKAGED UNITS (R22/R407c)					
Nominal Capacity	TR	5.5 TR	8.75 TR	11 TR	17 TR
Model no.- R22		ACDPUASC551PTH	ACDPUASC8751PTH	ACDPUASC1101PTH	ACDPUASC1701PTH
Model no.- R407c		ACDPUASC552PTH	ACDPUASC8752PTH	ACDPUASC1102PTH	ACDPUASC1702PTH
INDOOR UNITS					
Airflow	CMH	3740	5780	7480	11560
No. of Compressors		1	1	2	2
Compressor Type		Hermetic Scroll			
Power Supply	V/Ph/Hz	415V • 3PH • 50Hz (4 Wire, AC supply)			
Evaporator Fan		Centrifugal Forward Curved, Double Inlet Double Width			
Dimensions (L x D x H)	mm	960 x 730 x 1660	960 x 730 x 1660	1160 x 735 x 1796	1427 x 800 x 1872
Net weight	kg	221	231	287	351
AIR COOLED CONDENSERS					
No. of Condensers		1	1	2	2
Power Supply	V/Ph/Hz	230V • 1PH • 50Hz (2 Wire, AC supply)			
Condenser fan		Axial			
No. of Fans/Condenser		1	2	1	2
Dimensions/CU (L x D x H)	mm	1200 x 450 x 960	1550 x 575 x 960	1200 x 450 x 960	1550 x 575 x 960
Net weight/Condenser	kg	107	119	107	119
Liquid Line Size	mm	12.7	15.8	12.7	15.8
Hot gas Line Size	mm	15.8	19	15.8	19
MCB Rating	A	25	40	50	63
Cable Size (Material)-Incomer	Sq.mm	4C x 4 (Cu) / 4C x 6 (Al)	4C x 4 (Cu) / 4C x 6 (Al)	4C x 10 (Cu) / 4C x 16 (Al)	4C x 10 (Cu) / 4C x 16 (Al)
Cable Size (Material)-ODU to IDU	Sq.mm	3C x 1.5 (Cu)	3C x 1.5 (Cu)	3C x 1.5 (Cu)	3C x 1.5 (Cu)

TECHNICAL DATA - TROPICO PACKAGED UNITS

HIGH PERFORMANCE PACKAGED UNITS (R22/R407c)					
Nominal Capacity	TR	5.5 TR	8.75 TR	11 TR	17 TR
Model no.- R22		ACDPUASC551PHS	ACDPUASC8751PHS	ACDPUASC1101PHS	ACDPUASC1701PHS
Model no.- R407c		ACDPUASC552PHS	ACDPUASC8752PHS	ACDPUASC1102PHS	ACDPUASC1702PHS
INDOOR UNITS					
Airflow	CMH	5780	7480	11560	14960
No. of Compressors		1	1	2	2
Compressor Type		Hermetic Scroll			
Power Supply	V/Ph/Hz	415V • 3PH • 50Hz (4 Wire, AC supply)			
Evaporator Fan		Centrifugal Forward Curved, Double Inlet Double Width			
Dimensions (L x D x H)	mm	960 x 730 x 1660	1160 x 735 x 1796	1427 x 800 x 1872	1988 x 800 x 1872
Net weight	kg	231	287	351	499
AIR COOLED CONDENSERS					
No. of Condensers		1	1	2	2
Power Supply	V/Ph/Hz	230V • 1PH • 50Hz (2 Wire, AC supply)			
Condenser fan		Axial			
No. of Fans/Condenser		1	2	1	2
Dimensions/CU (L x D x H)	mm	1200 x 450 x 960	1550 x 575 x 960	1200 x 450 x 960	1550 x 575 x 960
Net weight/Condenser	kg	107	119	107	119
Liquid Line Size	mm	12.7	15.8	12.7	15.8
Hot gas Line Size	mm	15.8	19	15.8	19
MCB Rating	A	25	40	50	63
Cable Size (Material)-Incomer	Sq.mm	4C x 4 (Cu) / 4C x 6 (Al)	4C x 4 (Cu) / 4C x 6 (Al)	4C x 10 (Cu) / 4C x 16 (Al)	4C x 10 (Cu) / 4C x 16 (Al)
Cable Size (Material)-ODU to IDU	Sq.mm	3C x 1.5 (Cu)	3C x 1.5 (Cu)	3C x 1.5 (Cu)	3C x 1.5 (Cu)

- Notes:**
- 1 The nominal capacities mentioned are at rating conditions of Indoor Temperature: 27°C DBT /19°C WBT and Outdoor Temperature: 35°C DBT for Air-cooled units.
  - 2 THERMO & TROPICO Air cooled Packaged units are suitable to operate upto ambient temperature of 52°C.
  - 3 Air-cooled Packaged units are to be charged at site.
  - 4 The piping sizes given are recommended for 7.5 m equivalent length between ODU & IDU. For longer piping lengths, please contact Voltas representative.
  - 5 In addition to mentioned above, one more interlocking cable of size 3C x 1.5 sq mm is required between IDU & ODU.

Product design and innovation is a continuous process in VOLTAS and hence the above specifications are subject to change without notice.

REFERENCE PROJECTS



NATIONAL LAW UNIVERSITY  
AMPHITHEATRE



P&M MALL



VIT UNIVERSITY



BURGER KING



NAJRUL TIRTHA



SHREE NARAYANA STUDIO



RAJMAHAL RESORTS



PARADISE RESTAURANT



SYDNEY HEIGHTS RESORTS